



You'll appreciate the comfort (and the value) of this soft, midweight pullover all year round.

- 13.8-ounce, 100% polyester
- Twill-taped neck
- Reverse coil zipper
- Chin guard
- Bungee cord zipper pull
- Open cuffs
- Open hem with drawcord and toggles for adjustability

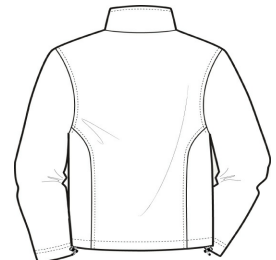
**CARE INSTRUCTIONS**

Machine wash cold. Gentle cycle with like colors.  
 Non-chlorine bleach when needed. Tumble dry low.  
 Remove promptly. Do not iron.

[Tips For Effectively Screen Printing Polyester Fabrics](#)



front



back

**HOW TO MEASURE**



**CHEST**  
 With arms down at sides, measure around the upper body, under arms and over the fullest part of the chest.

**SIZE CHART**

	XS	S	M	L	XL	2XL	3XL	4XL	5XL	6XL
Chest Size (Inches)	32-34	35-37	38-40	41-43	44-46	47-49	50-53	54-57	58-60	61-63

**COLOR INFORMATION**



Black  
 PMS Ntr Black C



Forest Green  
 PMS 553 C



Iron Grey  
 PMS 7540 C



Maroon  
 PMS 504 C



True Navy  
 PMS 276 C



True Red  
 PMS 187 C



True Royal  
 PMS 7687 C